



RECP #: 752721

RECORDED 5/8/2019 AT 1:13 PM BK# 2620 PG# 1763  
Debra K. Lee, CLERK OF LARAMIE COUNTY, WY PAGE 1 OF 1

# STATE OF WYOMING CORNER RECORD

(In compliance with the CORNER PERPETUATION AND FILING ACT, Wyoming Statutes, 1997 Section 33-29-140, et. seq., and the Rules and Regulations of the Board of Registrations for Professional Engineers and Professional Land Surveyors)

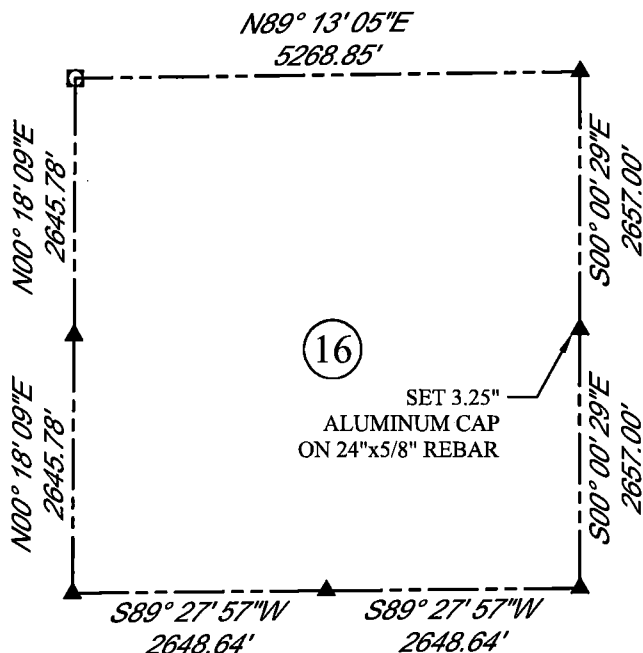
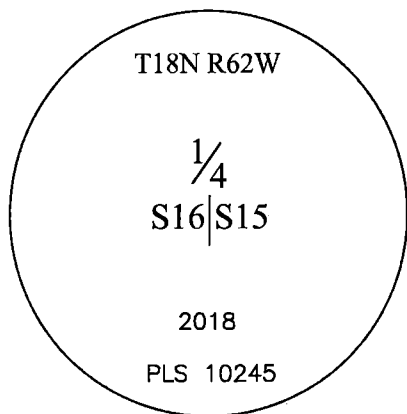
## EAST QUARTER CORNER SECTION 16, T. 18 N., R. 62 W., 6TH P.M., LARAMIE COUNTY, WYOMING

GLO: SET SANDSTONE 16X12X8, 10 ins. DEEP, MARKED 1/4 ON WEST SIDE FOR 1/4 SECTION CORNER  
FOUND: NOTHING. SET 3.25" ALUMINUM CAP AT PROPORTIONATE (SINGLE) DISTANCE, MARKED AS SHOWN



SCALE: NONE  
NORTH DETERMINED BY  
G.P.S OBSERVATIONS

SET 3.25" ALUMINUM CAP,  
STAMPED AS SHOWN.  
SET 2 MAG NAILS IN FENCE  
POSTS +/-150' EASTERLY AND  
125' SOUTHEASTERLY.



### LEGEND:

- FOUND BLM CAP
- FOUND USFS CAP
- FOUND STONE
- FOUND PRIVATE MONUMENT
- ◆ CALCULATED POSITION
- ▲ SET MONUMENT (LS10245)
- SECTION LINE

DATE OF FIELD WORK: 10/08/2018 OFFICE REFERENCE: MERIDEN

### CROSS INDEX DIAGRAM

	1	2	3	4	5	6	7	8	9	10	11	12	13	14	15	16	17	18	19	20	21	22	23	24	25
A																									
B																									
C		6				5				4				3				2						1	
D																									
E																									
F																									
G		7				8				9				10				11						12	
H																									
J																									
K																									
L		18				17				16			●	15				14						13	
M																									
N																									
O																									
P		19				20				21				22				23						24	
Q																									
R																									
S																									
T		30				29				28				27				26						25	
U																									
V																									
W																									
X																									
Y		31				32				33				34				35						36	
Z																									

WOOD  
2615 AVIATION DRIVE  
SHERIDAN, WY 82801  
PH: 307-675-6400

THIS CORNER RECORD WAS  
PREPARED BY ME OR UNDER  
MY DIRECTION AND  
SUPERVISION,  
SEAL AND SIGNATURE

# wood.

